



Rabenosyn-5 Polyclonal Antibody

Catalog No	YP-Ab-00718
Isotype	IgG
Reactivity	Human;Mouse
Applications	WB;ELISA;IHC
Gene Name	ZFYVE20
Protein Name	Rabenosyn-5
Immunogen	The antiserum was produced against synthesized peptide derived from human ZFYVE20. AA range:145-194
Specificity	Rabenosyn-5 Polyclonal Antibody detects endogenous levels of Rabenosyn-5 protein.
Formulation	Liquid in PBS containing 50% glycerol, 0.5% BSA and 0.02% sodium azide.
Source	Polyclonal, Rabbit,IgG
Purification	The antibody was affinity-purified from rabbit antiserum by affinity-chromatography using epitope-specific immunogen.
Dilution	WB 1:500-2000;IHC-p 1:50-300; ELISA 2000-20000
Concentration	1 mg/ml
Purity	≥90%
Storage Stability	-20°C/1 year
Synonyms	ZFYVE20; Rabenosyn-5; 110 kDa protein; FYVE finger-containing Rab5 effector protein rabenosyn-5; Zinc finger FYVE domain-containing protein 20
Observed Band	89kD
Cell Pathway	Cell membrane; Lipid-anchor; Cytoplasmic side. Early endosome membrane ; Lipid-anchor. Enriched in endosomes that are in close proximity to clathrin-enriched regions at the cell surface. .
Tissue Specificity	Brain,Cervix carcinoma,Epithelium,Human salivary gland,
Function	function:Rab4/Rab5 effector protein acting in early endocytic membrane fusion and membrane trafficking of recycling endosomes. Required for endosome fusion either homotypically or with clathrin coated vesicles. Plays a role in the lysosomal trafficking of cathepsin D from the Golgi to lysosomes. Also promotes the recycling of transferrin directly from early endosomes to the plasma membrane. Binds phospholipid vesicles containing phosphatidylinositol 3-phosphate (PtdInsP3).,similarity:Contains 1 C2H2-type zinc finger.,similarity:Contains 1 FYVE-type zinc finger.,similarity:Contains 1 UIM (ubiquitin-interacting motif) repeat.,subunit:Interacts with EHD1, RAB4A, RAB5A, RAB22A, RAB24 and VPS45. Binds simultaneously to RAB4A and RAB5A in vitro. Interacts with RAB4A and RAB5A that has been activated by GTP binding.,



Background

This gene encodes a protein that belongs to the FYVE zinc finger family of proteins. The encoded protein interacts with Ras-related proteins that regulate membrane trafficking. A missense mutation in this gene is associated with a defect in the early endocytic pathway. Alternative splicing results in multiple transcript variants. [provided by RefSeq, Oct 2014],

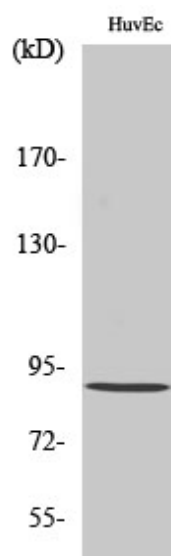
matters needing attention

Avoid repeated freezing and thawing!

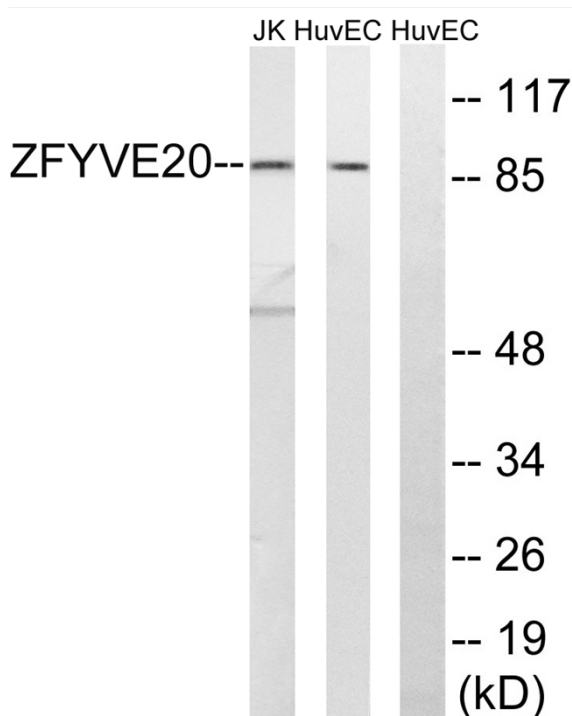
Usage suggestions

This product can be used in immunological reaction related experiments. For more information, please consult technical personnel.

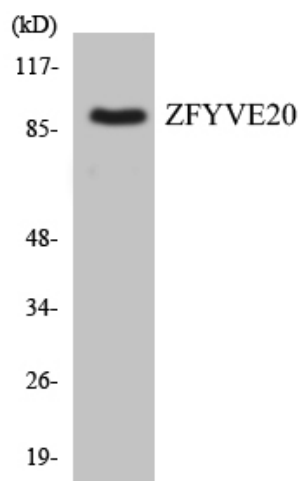
Products Images



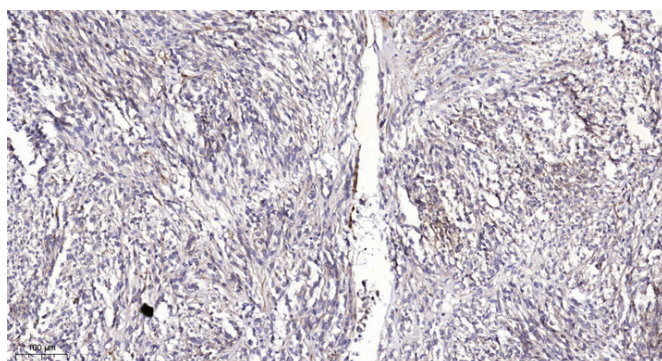
Western Blot analysis of various cells using Rabenosyn-5 Polyclonal Antibody diluted at 1:1000



Western blot analysis of lysates from HUVEC and Jurkat cells, using ZFYVE20 Antibody. The lane on the right is blocked with the synthesized peptide.



Western blot analysis of the lysates from COLO205 cells using ZFYVE20 antibody.



Immunohistochemical analysis of paraffin-embedded human Colon cancer. 1, Antibody was diluted at 1:200(4° overnight). 2, Tris-EDTA,pH9.0 was used for antigen retrieval. 3,Secondary antibody was diluted at 1:200(room temperature, 45min).